



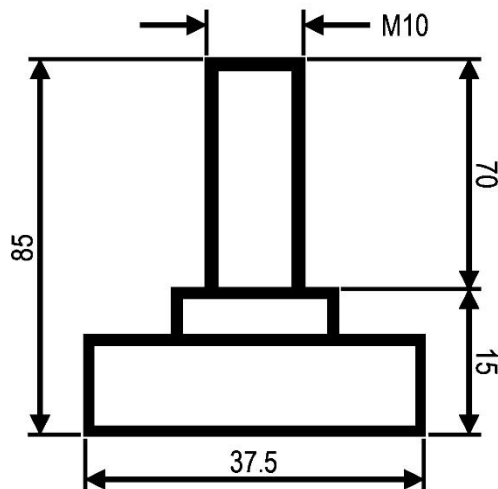
*"Experts in Specialist  
Wheels & Tyres"*

## PRODUCT INFORMATION

### Rigid Levelling Foot

**Material:** Zinc plated thread on polyamide base. The stem turns in the base for adjustment of heavy units whilst under load.

<b>Part number:</b>	5354
<b>Thread size:</b>	M10x1.5
<b>Total height:</b>	85mm
<b>Thread length:</b>	70mm
<b>Base height:</b>	15mm
<b>Base diameter:</b>	37.5mm
<b>Max recommended load:</b>	750kg



Telephone: (353) 1 452 0482  
Email: [info@parnell.eu](mailto:info@parnell.eu)

[www.parnells.eu](http://www.parnells.eu)

Unit A1 - A4  
Southcity Business Centre  
Whitestown Way  
Tallaght  
Dublin D24 HT95  
Ireland