



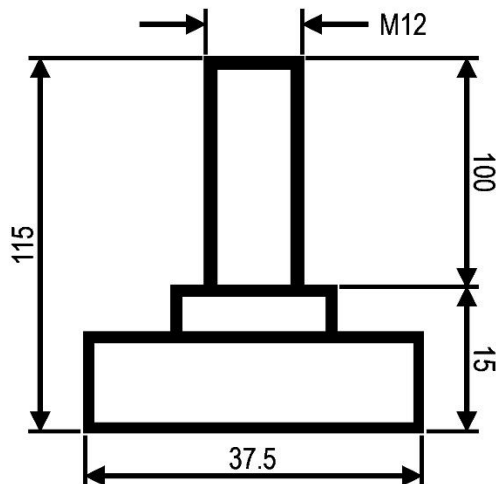
*"Experts in Specialist  
Wheels & Tyres"*

## PRODUCT INFORMATION

### Rigid Levelling Foot

**Material:** Zinc plated thread on polyamide base. The stem turns in the base for adjustment of heavy units whilst under load.

Part number:	5385
Thread size:	M12x1.75
Total height:	115mm
Thread length:	100mm
Base height:	15mm
Base diameter:	37.5mm
Max recommended load:	750kg



Telephone: (353) 1 452 0482  
Email: [info@parnell.eu](mailto:info@parnell.eu)

[www.parnells.eu](http://www.parnells.eu)

Unit A1 - A4  
Southcity Business Centre  
Whitestown Way  
Tallaght  
Dublin D24 HT95  
Ireland