



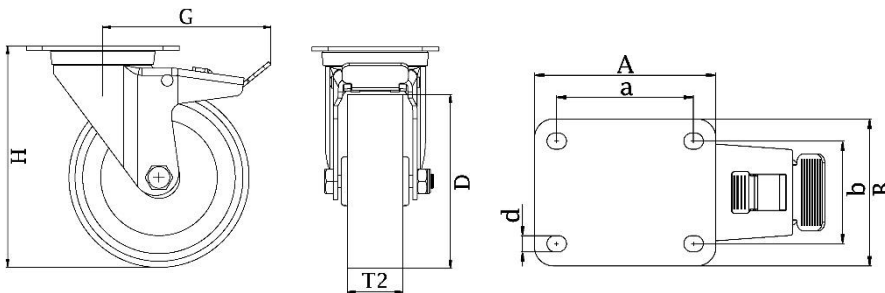
*"Experts in Specialist
Wheels & Tyres"*

PRODUCT INFORMATION

300 Series Top Plate Castor

Material: Zinc plated swivel/brake bracket with top plate fitting. Wheel with grey solid standard rubber tyre on polypropylene centre.

Part number:	351799
Wheel diameter (D):	160mm
Tread width (T2):	38mm
Tread hardness:	85° Shore A
Wheel bearing:	Roller bearing
Top plate size (AxB):	140x110mm
Fixing hole spacing (axb):	105x80mm
Fixing hole size (d):	11mm
Brake pedal radius (G):	147mm
Overall height (H):	193mm
Load capacity 3km/h:	135kg
Rolling resistance:	Reasonable
Operating noise:	Very good
Floor preservation:	Very good



Telephone: (353) 1 452 0482
Email: info@parnell.eu

www.parnells.eu

Unit A1 - A2
Southcity Business Centre
Whitestown Way
Tallaght
Dublin D24 HT95
Ireland