



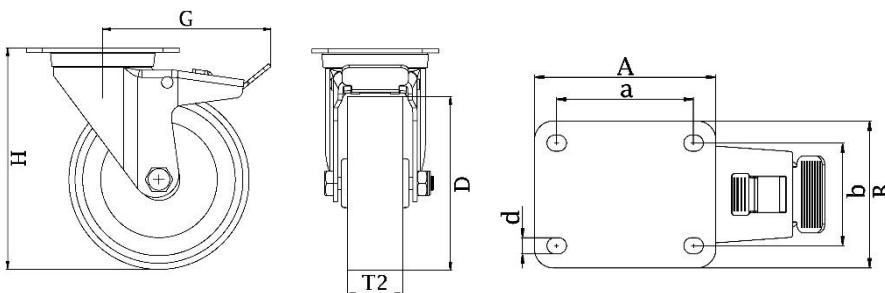
*"Experts in Specialist
Wheels & Tyres"*

PRODUCT INFORMATION

300 Series Top Plate Castor

Material: Zinc plated swivel/brake bracket with top plate fitting. Wheel with blue solid elastic rubber tyre on nylon centre.

Part number:	352141
Wheel diameter (D):	80mm
Tread width (T2):	32mm
Tread hardness:	70° Shore A
Wheel bearing:	Plain bearing
Top plate size (AxB):	100x80mm
Fixing hole spacing (axb):	80x60mm
Fixing hole size (d):	9mm
Brake pedal radius (G):	105mm
Overall height (H):	111mm
Load capacity 3km/h:	140kg
Rolling resistance:	Very good
Operating noise:	Very good
Floor preservation:	Very good



Telephone: (353) 1 452 0482
Email: info@parnell.eu

www.parnells.eu

Unit A1 - A2
Southcity Business Centre
Whitestown Way
Tallaght
Dublin D24 HT95
Ireland