



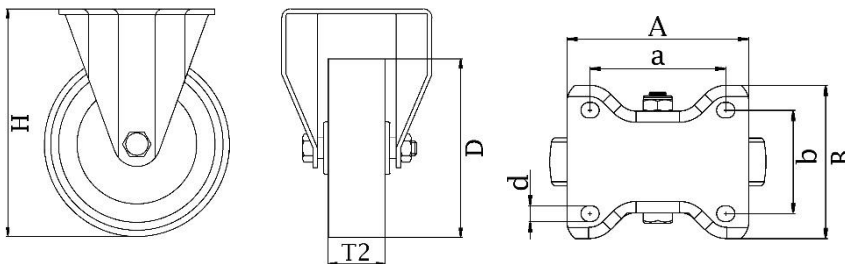
*"Experts in Specialist
Wheels & Tyres"*

PRODUCT INFORMATION

300 Series Top Plate Castor

Material: Zinc plated fixed bracket with top plate fitting. Wheel with blue solid elastic rubber tyre on nylon centre.

Part number:	352166
Wheel diameter (D):	160mm
Tread width (T2):	46mm
Tread hardness:	70° Shore A
Wheel bearing:	Roller bearing
Top plate size (AxB):	146x107mm
Fixing hole spacing (axb):	105x80mm
Fixing hole size (d):	11mm
Overall height (H):	193mm
Load capacity 3km/h:	350kg
Rolling resistance:	Very good
Operating noise:	Very good
Floor preservation:	Very good



Telephone: (353) 1 452 0482
Email: info@parnell.eu

www.parnells.eu

Unit A1 - A2
Southcity Business Centre
Whitestown Way
Tallaght
Dublin D24 HT95
Ireland