



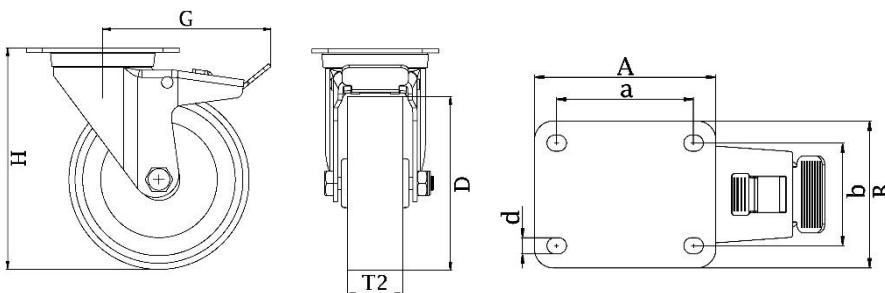
*"Experts in Specialist  
Wheels & Tyres"*

## PRODUCT INFORMATION

# 300 Series Top Plate Castor

**Material:** Zinc plated swivel/brake bracket with top plate fitting. Wheel with red thermoplastic polyurethane tread on nylon centre.

|                                   |                |
|-----------------------------------|----------------|
| <b>Part number:</b>               | 352303         |
| <b>Wheel diameter (D):</b>        | 100mm          |
| <b>Tread width (T2):</b>          | 30mm           |
| <b>Tread hardness:</b>            | 98° Shore A    |
| <b>Wheel bearing:</b>             | Roller bearing |
| <b>Top plate size (AxB):</b>      | 100x80mm       |
| <b>Fixing hole spacing (axb):</b> | 80x60mm        |
| <b>Fixing hole size (d):</b>      | 9mm            |
| <b>Brake pedal radius (G):</b>    | 105mm          |
| <b>Overall height (H):</b>        | 128mm          |
| <b>Load capacity 3km/h:</b>       | 170kg          |
| <b>Rolling resistance:</b>        | Very good      |
| <b>Operating noise:</b>           | Good           |
| <b>Floor preservation:</b>        | Good           |



Telephone: (353) 1 452 0482  
Email: [info@parnell.eu](mailto:info@parnell.eu)

[www.parnells.eu](http://www.parnells.eu)

Unit A1 - A2  
Southcity Business Centre  
Whitestown Way  
Tallaght  
Dublin D24 HT95  
Ireland