



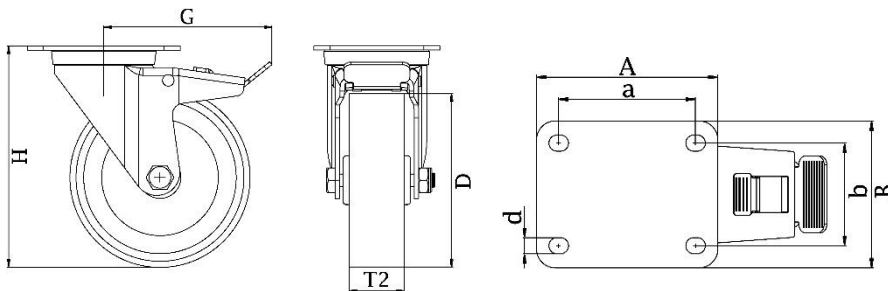
*"Experts in Specialist
Wheels & Tyres"*

PRODUCT INFORMATION

300 Series Top Plate Castor

Material: Zinc plated swivel/brake bracket with top plate fitting. Wheel with grey thermoplastic polyurethane tread on polypropylene centre.

| | |
|-----------------------------------|---------------|
| Part number: | 352313 |
| Wheel diameter (D): | 200mm |
| Tread width (T2): | 50mm |
| Tread hardness: | 98° Shore A |
| Wheel bearing: | Ball bearings |
| Top plate size (AxB): | 140x110mm |
| Fixing hole spacing (axb): | 105x80mm |
| Fixing hole size (d): | 11mm |
| Brake pedal radius (G): | 165mm |
| Overall height (H): | 233mm |
| Load capacity 3km/h: | 350kg |
| Rolling resistance: | Very good |
| Operating noise: | Good |
| Floor preservation: | Good |



Telephone: (353) 1 452 0482
Email: info@parnell.eu

www.parnells.eu

Unit A1 - A2
Southcity Business Centre
Whitestown Way
Tallaght
Dublin D24 HT95
Ireland