



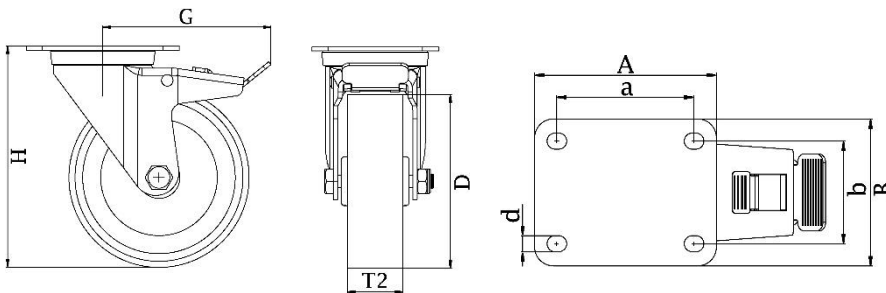
*"Experts in Specialist
Wheels & Tyres"*

PRODUCT INFORMATION

300 Series Top Plate Castor

Material: Zinc plated swivel/brake bracket with top plate fitting. White polypropylene wheel.

Part number:	418100
Wheel diameter (D):	125mm
Tread width (T2):	37mm
Tread hardness:	70° shore D
Wheel bearing:	Roller bearing
Top plate size (AxB):	100x80mm
Fixing hole spacing (axb):	80x60mm
Fixing hole size (d):	9mm
Brake pedal radius (G):	110mm
Overall height (H):	152mm
Load capacity 3km/h:	170kg
Rolling resistance:	Excellent
Operating noise:	Reasonable
Floor preservation:	Reasonable



Telephone: (353) 1 452 0482
Email: info@parnell.eu

www.parnells.eu

Unit A1 - A2
Southcity Business Centre
Whitestown Way
Tallaght
Dublin D24 HT95
Ireland