



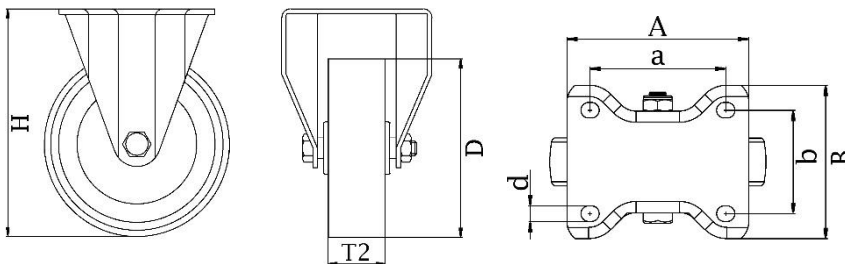
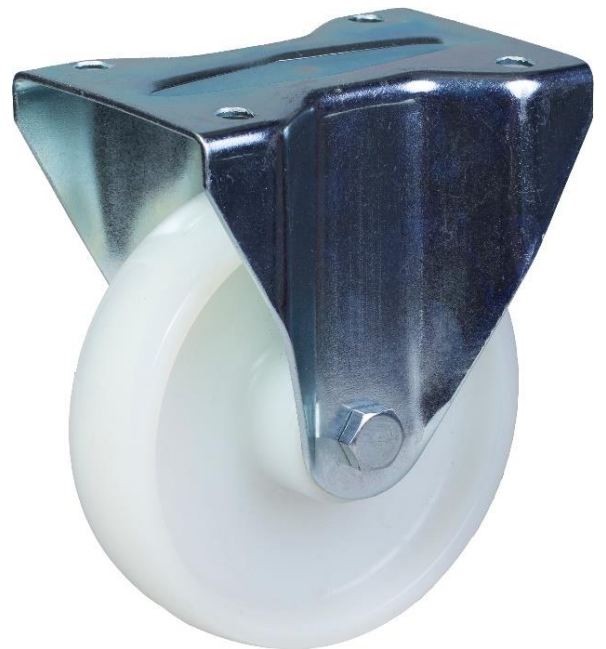
*"Experts in Specialist
Wheels & Tyres"*

PRODUCT INFORMATION

300 Series Top Plate Castor

Material: Zinc plated fixed bracket with top plate fitting. White nylon wheel.

| | |
|-----------------------------------|---------------|
| Part number: | 352117 |
| Wheel diameter (D): | 160mm |
| Tread width (T2): | 45mm |
| Tread hardness: | 70° Shore D |
| Wheel bearing: | Plain bearing |
| Top plate size (AxB): | 146x107mm |
| Fixing hole spacing (axb): | 105x80mm |
| Fixing hole size (d): | 11mm |
| Overall height (H): | 193mm |
| Load capacity 3km/h: | 300kg |
| Rolling resistance: | Excellent |
| Operating noise: | Reasonable |
| Floor preservation: | Reasonable |



Telephone: (353) 1 452 0482
Email: info@parnell.eu

www.parnells.eu

Unit A1 - A2
Southcity Business Centre
Whitestown Way
Tallaght
Dublin D24 HT95
Ireland