



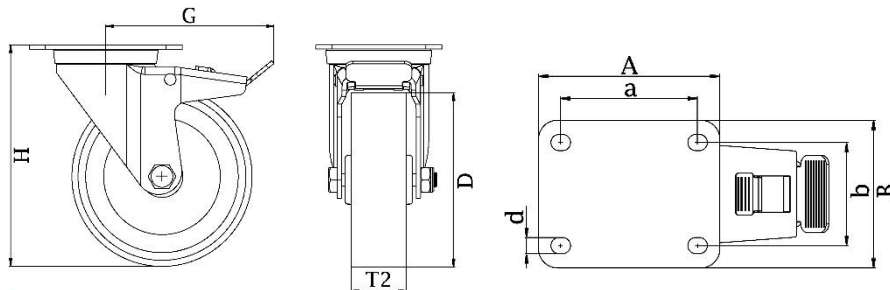
"Experts in Specialist
Wheels & Tyres"

PRODUCT INFORMATION

100 Series Top Plate Castor

Material: Zinc plated swivel/brake bracket with top plate fitting. Wheel with grey thermoplastic rubber tread on polypropylene centre, electrically conductive.

Part number:	270700
Wheel diameter (D):	50mm
Tread width (T2):	19mm
Tread hardness:	85° Shore A
Electrical conductivity:	$\leq 10^4 \Omega$
Wheel bearing:	Plain bearing
Top plate size (AxB):	60x60mm
Fixing hole spacing (axb):	43x43mm
Fixing hole size (d):	6mm
Brake pedal radius (G):	73mm
Overall height (H):	70mm
Load capacity 3km/h:	30kg
Rolling resistance:	Very good
Operating noise:	Good
Floor preservation:	Good



Telephone: (353) 1 452 0482
Email: info@parnells.eu

www.parnells.eu

Unit A1 - A2
Southcity Business Centre
Whitestown Way
Tallaght
Dublin D24 HT95
Ireland