



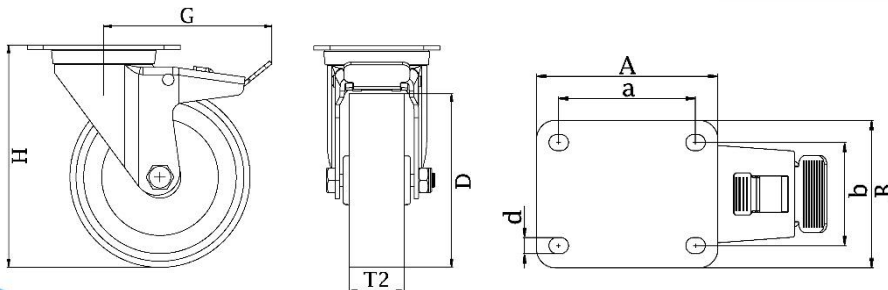
"Experts in Specialist
Wheels & Tyres"

PRODUCT INFORMATION

300 Series Top Plate Castor

Material: Zinc plated swivel/brake bracket with top plate fitting. Wheel with grey thermoplastic rubber tread on polypropylene centre, electrically conductive.

| | |
|-----------------------------------|--------------------|
| Part number: | 265100 |
| Wheel diameter (D): | 125mm |
| Tread width (T2): | 32mm |
| Tread hardness: | 85° Shore A |
| Electrical conductivity: | $\leq 10^4 \Omega$ |
| Wheel bearing: | Plain bearing |
| Top plate size (AxB): | 100x80mm |
| Fixing hole spacing (axb): | 80x60mm |
| Fixing hole size (d): | 9mm |
| Brake pedal radius (G): | 110mm |
| Overall height (H): | 152mm |
| Load capacity 3km/h: | 80kg |
| Rolling resistance: | Very good |
| Operating noise: | Good |
| Floor preservation: | Good |



Telephone: (353) 1 452 0482
Email: info@parnell.eu

www.parnells.eu

Unit A1 - A2
Southcity Business Centre
Whitestown Way
Tallaght
Dublin D24 HT95
Ireland