



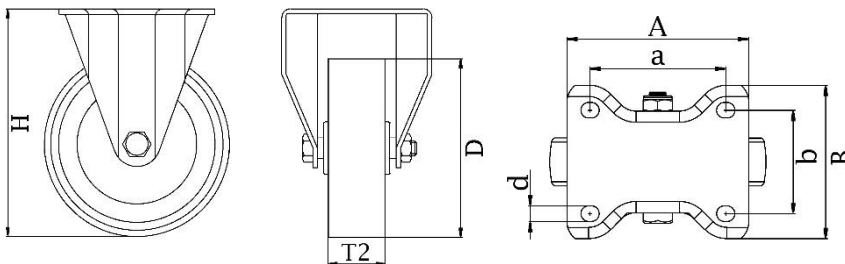
*"Experts in Specialist
Wheels & Tyres"*

PRODUCT INFORMATION

300SS Series Stainless Steel Top Plate Castor

Material: Fixed bracket in stainless steel with top plate fitting. Wheel with red thermoplastic polyurethane tread on nylon centre.

Part number:	420013
Wheel diameter (D):	125mm
Tread width (T2):	35mm
Tread hardness:	98° Shore A
Wheel bearing:	Plain bearing
Top plate size (AxB):	100x85mm
Fixing hole spacing (axb):	80x60mm
Fixing hole size (d):	9mm
Overall height (H):	150mm
Load capacity 3km/h:	150kg
Rolling resistance:	Very good
Operating noise:	Good
Floor preservation:	Good



Telephone: (353) 1 452 0482
Email: info@parnell.eu

www.parnells.eu

Unit A1 - A2
Southcity Business Centre
Whitestown Way
Tallaght
Dublin D24 HT95
Ireland