



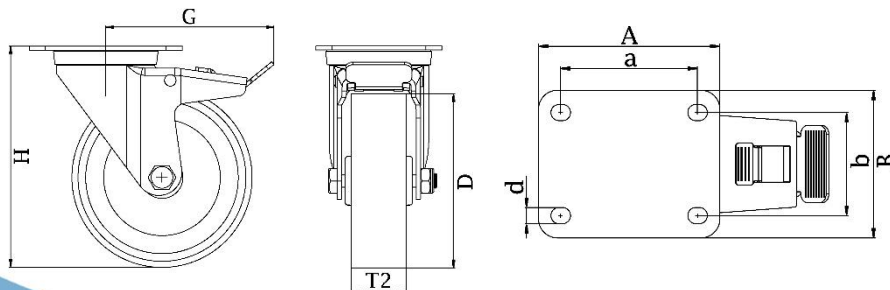
"Experts in Specialist  
Wheels & Tyres"

## PRODUCT INFORMATION

# 300SS Series Stainless Steel Top Plate Castor

**Material:** Swivel/brake bracket in stainless steel with top plate fitting. Wheel with grey thermoplastic polyurethane tread on nylon centre, electrically conductive.

|                                   |                                       |
|-----------------------------------|---------------------------------------|
| <b>Part number:</b>               | 530019                                |
| <b>Wheel diameter (D):</b>        | 80mm                                  |
| <b>Tread width (T2):</b>          | 32mm                                  |
| <b>Tread hardness:</b>            | 94° Shore A                           |
| <b>Electrical conductivity:</b>   | $\leq 10^4 \Omega$                    |
| <b>Wheel bearing:</b>             | Additional sealed single ball bearing |
| <b>Top plate size (AxB):</b>      | 100x85mm                              |
| <b>Fixing hole spacing (axb):</b> | 80x60mm                               |
| <b>Fixing hole size (d):</b>      | 9mm                                   |
| <b>Brake pedal radius (G):</b>    | 115mm                                 |
| <b>Overall height (H):</b>        | 105mm                                 |
| <b>Load capacity 3km/h:</b>       | 100kg                                 |
| <b>Rolling resistance:</b>        | Very good                             |
| <b>Operating noise:</b>           | Good                                  |
| <b>Floor preservation:</b>        | Good                                  |



Telephone: (353) 1 452 0482  
Email: [info@parnell.eu](mailto:info@parnell.eu)

[www.parnells.eu](http://www.parnells.eu)

Unit A1 - A2  
Southcity Business Centre  
Whitestown Way  
Tallaght  
Dublin D24 HT95  
Ireland