



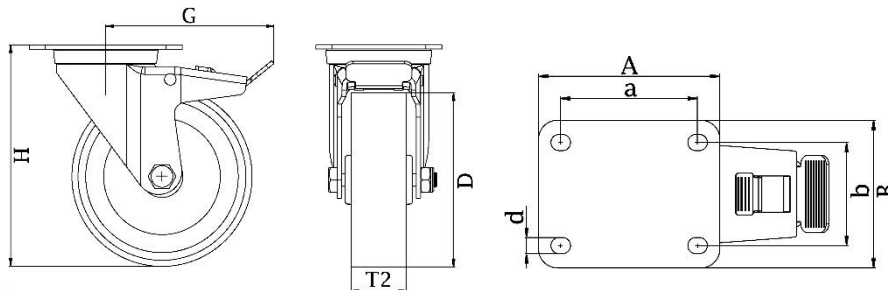
"Experts in Specialist
Wheels & Tyres"

PRODUCT INFORMATION

800SS Series Stainless Steel Top Plate Castor

Material: Swivel/brake bracket in stainless steel with top plate fitting. Wheel with grey thermoplastic polyurethane tread on nylon centre, electrically conductive.

Part number:	530039
Wheel diameter (D):	200mm
Tread width (T2):	50mm
Tread hardness:	94° Shore A
Electrical conductivity:	$\leq 10^4 \Omega$
Wheel bearing:	Stainless ball bearings
Top plate size (AxB):	140x110mm
Fixing hole spacing (axb):	105x75-80mm
Fixing hole size (d):	11mm
Brake pedal radius (G):	190mm
Overall height (H):	245mm
Load capacity 3km/h:	520kg
Rolling resistance:	Very good
Operating noise:	Good
Floor preservation:	Good



Telephone: (353) 1 452 0482
Email: info@parnell.eu

www.parnells.eu

Unit A1 - A2
Southcity Business Centre
Whitestown Way
Tallaght
Dublin D24 HT95
Ireland