



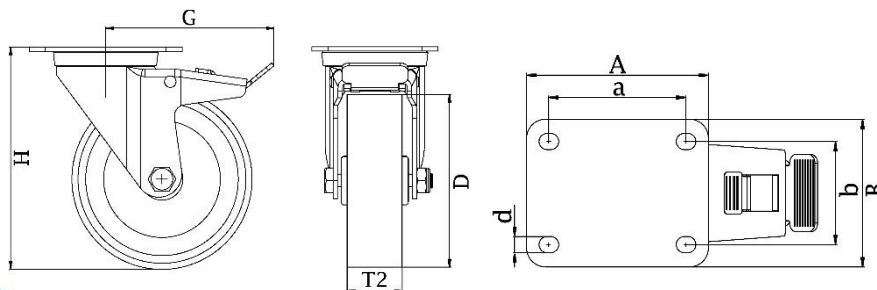
"Experts in Specialist  
Wheels & Tyres"

## PRODUCT INFORMATION

# 300HT Series Heat Resistant Top Plate Castor

**Material:** Zinc plated heat resistant swivel/brake bracket with top plate fitting. Grey heat resistant thermoplastic wheel.

<b>Part number:</b>	754702
<b>Wheel diameter (D):</b>	100mm
<b>Tread width (T2):</b>	30mm
<b>Tread hardness:</b>	85° Shore D
<b>Temperature range:</b>	-25°C - +250°C
<b>Wheel bearing:</b>	Plain bearing
<b>Top plate size (AxB):</b>	100x85mm
<b>Fixing hole spacing (axb):</b>	80x60mm
<b>Fixing hole size (d):</b>	9mm
<b>Brake pedal radius (G):</b>	115mm
<b>Overall height (H):</b>	125mm
<b>Load capacity 3km/h:</b>	At +250°C = 120kg
<b>Rolling resistance:</b>	Excellent
<b>Operating noise:</b>	Reasonable
<b>Floor preservation:</b>	Reasonable



Unit A1 - A2  
Southcity Business Centre  
Whitestown Way  
Tallaght  
Dublin D24 HT95  
Ireland

Telephone: (353) 1 452 0482  
Email: [info@parnell.eu](mailto:info@parnell.eu)

[www.parnells.eu](http://www.parnells.eu)