



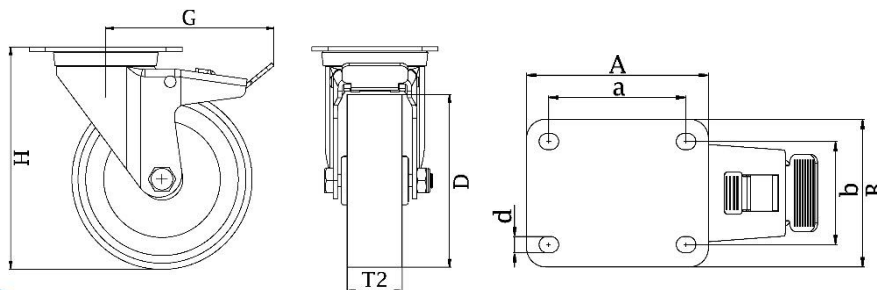
*"Experts in Specialist
Wheels & Tyres"*

PRODUCT INFORMATION

300HT Series Heat Resistant Top Plate Castor

Material: Zinc plated heat resistant swivel/brake bracket with top plate fitting. Grey heat resistant thermoplastic wheel.

Part number:	754704
Wheel diameter (D):	150mm
Tread width (T2):	50mm
Tread hardness:	85° Shore D
Temperature range:	-25°C - +250°C
Wheel bearing:	Plain bearing
Top plate size (AxB):	140x110mm
Fixing hole spacing (axb):	105x75-80mm
Fixing hole size (d):	11mm
Brake pedal radius (G):	171mm
Overall height (H):	190mm
Load capacity 3km/h:	At +250°C = 300kg
Rolling resistance:	Excellent
Operating noise:	Reasonable
Floor preservation:	Reasonable



Telephone: (353) 1 452 0482
Email: info@parnell.eu

www.parnells.eu

Unit A1 - A2
Southcity Business Centre
Whitestown Way
Tallaght
Dublin D24 HT95
Ireland