



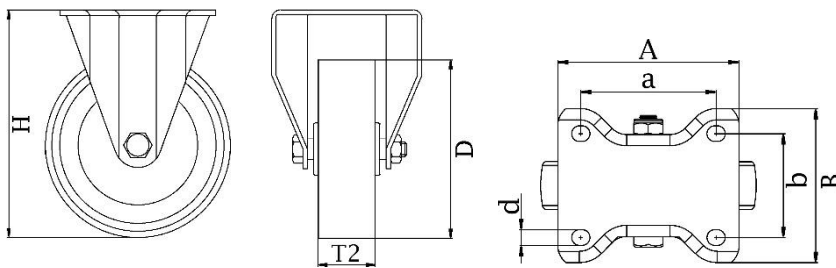
*"Experts in Specialist  
Wheels & Tyres"*

## PRODUCT INFORMATION

# 800 Series Top Plate Castor

**Material:** Zinc plated fixed bracket with top plate fitting. Grey cast iron wheel.

|                                   |                |
|-----------------------------------|----------------|
| <b>Part number:</b>               | 610001         |
| <b>Wheel diameter (D):</b>        | 150mm          |
| <b>Tread width (T2):</b>          | 45mm           |
| <b>Wheel bearing:</b>             | Roller bearing |
| <b>Top plate size (AxB):</b>      | 135x114mm      |
| <b>Fixing hole spacing (axb):</b> | 105x75-80mm    |
| <b>Fixing hole size (d):</b>      | 11mm           |
| <b>Overall height (H):</b>        | 210mm          |
| <b>Load capacity 3km/h:</b>       | 800kg          |
| <b>Rolling resistance:</b>        | Excellent      |
| <b>Operating noise:</b>           | Sufficient     |
| <b>Floor preservation:</b>        | Sufficient     |



Telephone: (353) 1 452 0482  
Email: [info@parnell.eu](mailto:info@parnell.eu)

[www.parnells.eu](http://www.parnells.eu)

Unit A1 - A2  
Southcity Business Centre  
Whitestown Way  
Tallaght  
Dublin D24 HT95  
Ireland