



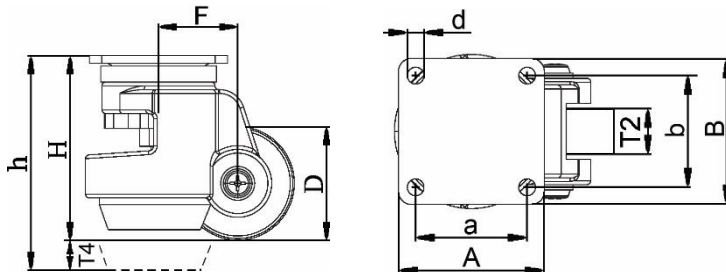
*"Experts in Specialist  
Wheels & Tyres"*

## PRODUCT INFORMATION

# Levelling Series Top Plate Castor

**Material:** Swivel bracket in die-cast aluminium with zinc plated steel top plate fitting. Black nylon wheel, truck lock made of aluminium.

<b>Part number:</b>	757023
<b>Wheel diameter (D):</b>	72mm
<b>Tread width (T2):</b>	32mm
<b>Tread hardness:</b>	70° Shore D
<b>Wheel bearing:</b>	Plain bearing
<b>Top plate size (AxB):</b>	95x95mm
<b>Fixing hole spacing (axb):</b>	70x70mm
<b>Fixing hole size (d):</b>	11mm
<b>Offset (F):</b>	55mm
<b>Overall height (H):</b>	122mm
<b>Max overall height (h):</b>	134mm
<b>Adjustment range (T4):</b>	12mm
<b>Load capacity 1km/h:</b>	1000kg
<b>Rolling resistance:</b>	Excellent
<b>Operating noise:</b>	Reasonable
<b>Floor preservation:</b>	Reasonable



Telephone: (353) 1 452 0482  
Email: [info@parnell.eu](mailto:info@parnell.eu)

[www.parnells.eu](http://www.parnells.eu)

Unit A1 - A2  
Southcity Business Centre  
Whitestown Way  
Tallaght  
Dublin D24 HT95  
Ireland