



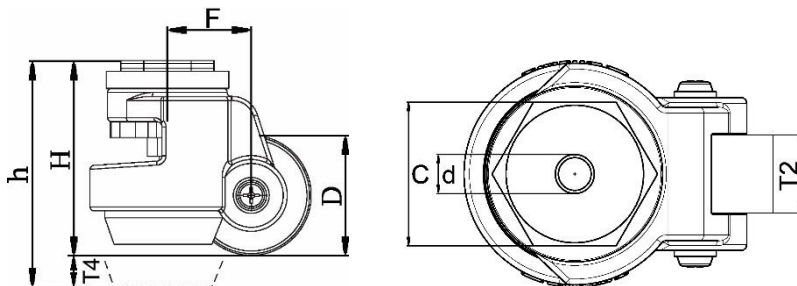
*"Experts in Specialist
Wheels & Tyres"*

PRODUCT INFORMATION

Levelling Series Bolt Hole Castor

Material: Swivel bracket in die-cast aluminium, zinc plated hexagon steel plate with female thread in the single bolt hole fitting. Black nylon wheel, truck lock made of hard rubber.

Part number:	757010
Wheel diameter (D):	45mm
Tread width (T2):	18mm
Tread hardness:	70° Shore D
Wheel bearing:	Plain bearing
Top plate width (C):	40mm
Bolt hole (d):	M8x12mm
Offset (F):	32mm
Overall height (H):	72mm
Max overall height (h):	80mm
Adjustment range (T4):	8mm
Load capacity 1km/h:	180kg
Rolling resistance:	Excellent
Operating noise:	Reasonable
Floor preservation:	Reasonable



Telephone: (353) 1 452 0482
Email: info@parnell.eu

www.parnells.eu

Unit A1 - A2
Southcity Business Centre
Whitestown Way
Tallaght
Dublin D24 HT95
Ireland